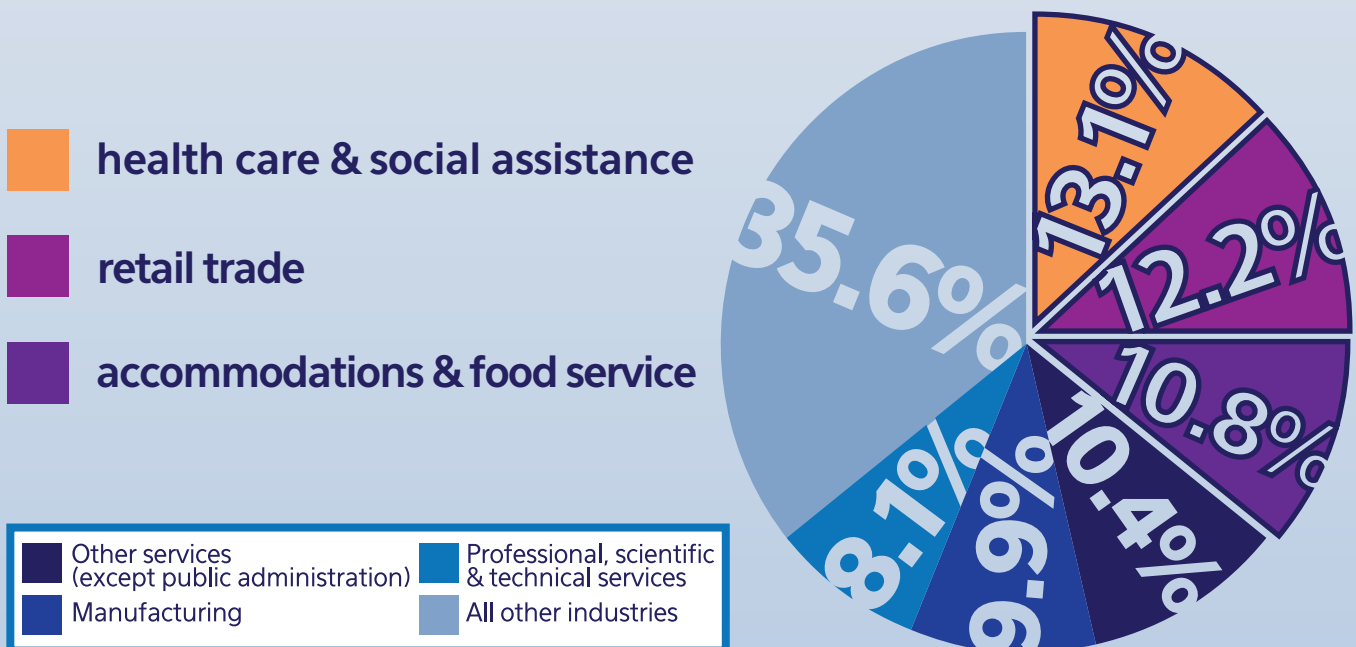




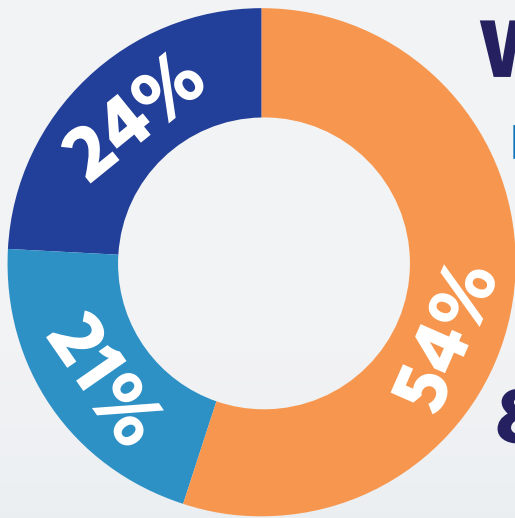
NWPB
EMPLOYER ONE SURVEY

Niagara's 2018 Employer One Survey saw 259 responses from industries across Niagara. These are the results:

The TOP 3 local industries reflected in Employer One were:



WORKFORCE LANDSCAPE



Employers who completed the survey represent a total of **16,904** people in the local workforce. About **54%** of that workforce is employed in a **full-time & permanent** capacity.

 Full-time staff Part-time staff Temporary, contract, & seasonal staff

 **75.6%** of employers who completed the survey reported hiring in 2017.

TOTAL NUMBER OF HIRES: 2,497



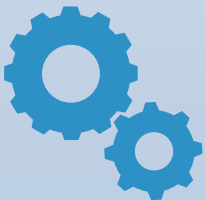
955

hires in sales and service occupations



370

hires in business, finance and administrative occupations

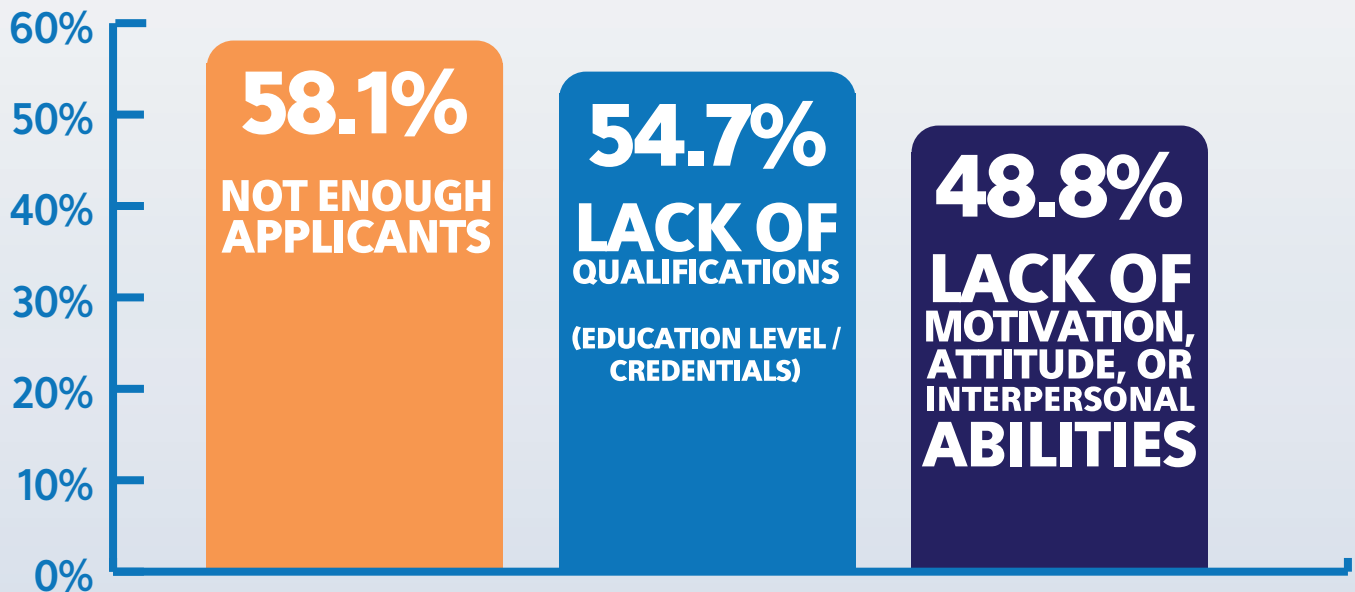


267

hires in manufacturing and utilities occupations

CHALLENGES

53.4% of employers reported hiring for **hard-to-fill positions**. We asked employers to select their top reasons why jobs were hard-to-fill. Three reasons were identified most often among those listed by respondents:



TOP 3 COMPETENCIES MOST VALUED IN THE WORKPLACE



Though technical skills are important, the data show that employers primarily value strong "soft" skills.

RATING THE AVAILABLE LABOUR FORCE

We asked employers to rate the availability of skilled labour in Niagara and showed this year's results compared to last year. **Almost 45%** of employers rated the available labour in Niagara as either **Good** or **Excellent**.

